



*Inspired by the natural beauty of stone,
Vicostone comes to life with Breton technologies.*





Six **breton** production lines

- **DURABILITY:** Composed of up to 93 percent of natural Quartz, VICOSTONE is resistant to scratch, heat, impact and corrosive chemical agents.
- **LOW MAINTENANCE:** VICOSTONE is stain resistant, that means you can easily clean VICOSTONE surfaces by using just a mild soap with warm water.
- **SAFETY:** Certified by NSF for food safety (ANSI 51) and certified by GreenGuard as being safe for indoor air quality of commercial and residential facilities as well as for children and schools.

CANADIAN DISTRIBUTION CENTERS



KEY MILESTONES

- **2021**
Launch of **Bahia, Amarcord, Vivalioro, Volakano, Madreperola** and **Thasos**. Especially, **Bahia** is the world's first Super White in quartz.
- **2020**
Opening of warehouse and showroom in **Calgary, Alberta** and representative office in **Winnipeg, Manitoba**.
Launch of **Gan Eden, Greylac, Paloma** (Honed), **Santenay** (Honed) and **Ceres**.
VICOSTONE was the third largest supplier of engineered stone countertops to the global market in 2019 (*Freedonia, 2020 report*)
- **2018**
Opening of warehouse and showroom in **Vancouver, British Columbia**.
Launch of **Nero Marquina, Diamante** and **Cemento**.
- **2017**
Opening of warehouse and showroom in **Montreal, Quebec**.
Launch of **Avorio, Acacia** and **Majestic Black** - the world's first travertine vein-cut collection in quartz.
- **2016**
Opening of warehouse and showroom in **Toronto, Ontario**.
Launch of **Arabescato**.
- **2010 - 2015**
Launched unique designs such as **Misterio, Statuario, Venatino, Calacatta** and so forth that brings Vicostone to the top leading innovative companies in the world.
- **2002 - 2009**
Established in Vietnam and distributed to key international markets as **USA, Australia, European, Canada, Russia** and **South Africa**.

PRODUCT INFORMATION

SLAB DIMENSIONS:

Standard size: 56" x 120"
Jumbo size: 65" x 130"

HALF SLAB DIMENSIONS:

27.5" x 120" or 32" x 130"



SURFACE FINISHES DETAIL: Polished, Honed and Leathered

THICKNESS	SLAB WEIGHT	KG/M²	LBS/SF
1.2 cm	126 - 134 kg	30 kg/m²	6.14 lb/sf
2.0 cm	198 - 206 kg	50 kg/m²	10.24 lb/sf
3.0 cm	299 - 310 kg	75 kg/m²	15.36 lb/sf

CERTIFICATIONS




EXOTIC
COLLECTION

The elegant and premium designs of our Exotic Collection provide endless beauty to all surfaces.





Bahia 
Bahia is the world's first Super White natural stone design in quartz



Amarcord 

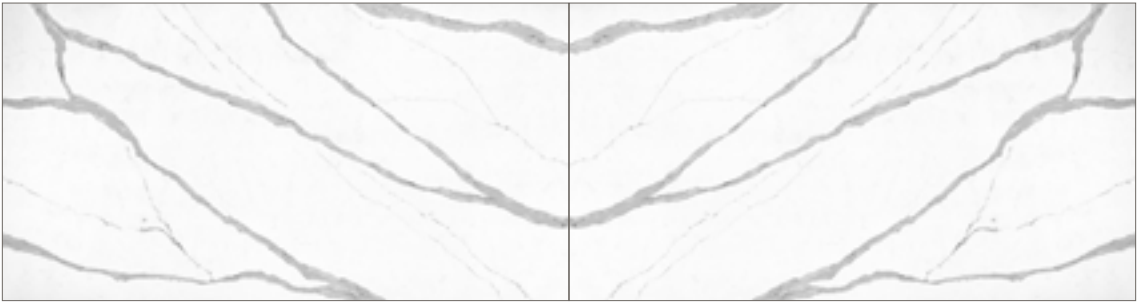


Bahia - BQ8883 (Full slab view)

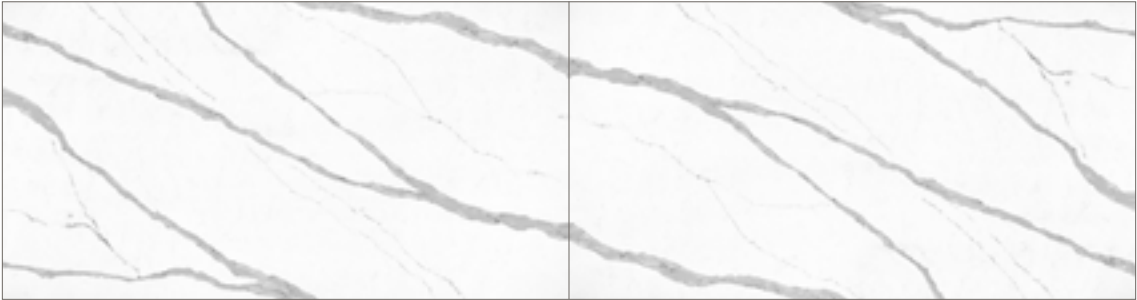


Amarcord - BQ9500 (Full slab view)





Book-matched veins



End-to-end continuous veins

Arabescato - BQ8912 (Full slab view)



Vivalioro 



Arabescato



NEW

Vivalioro - BQ8918 (Full slab view)





Diamante



Greylac



Diamante - BQ8788 (Full slab view)



Greylac - BQ8738 (Full slab view)

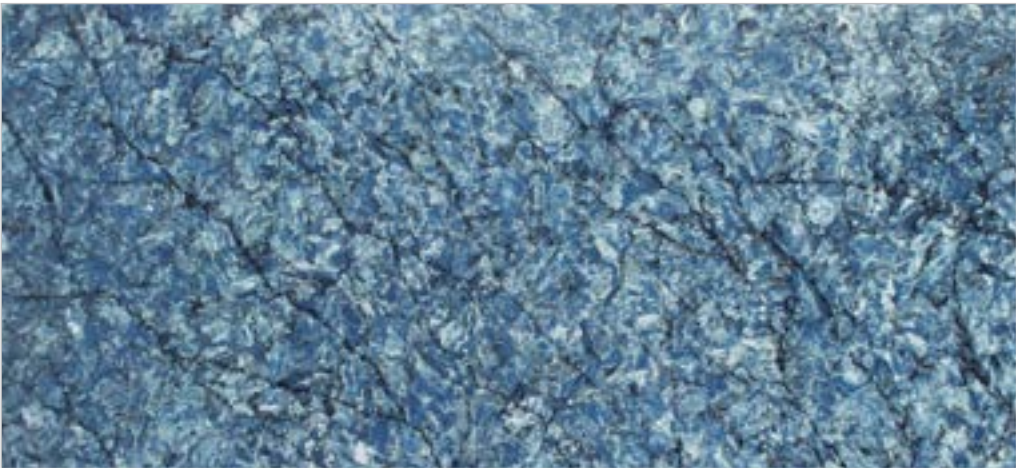





Nero Marquina - BQ8740 (Full slab view) 



Cemento - BQ8730 (Full slab view) 



Thunder Blue - BQ8786 (Full slab view) 



Nero Marquina



Statuario



Venatino



Statuario - BQ8628 (Full slab view)



Venatino - BQ8660 (Full slab view)





Gan Eden



Avorio



Gan Eden - BQ8881 (Full slab view)



Avorio - BQ9606



Acacia - BQ9610




White Fusion - BQ8825 (Full slab view)

NATURAL

COLLECTION

VICOSTONE's dynamic granite and elegant marble effect series creates a lasting impression for all upscale projects.

 Jumbo size available



Volakano - BQ8885 (Full slab view)



Madreperola - BQ8891 (Full slab view)



Volakano



Madreperola



Misterio



Argento



Misterio - BQ8815 (Full slab view)




Argento - BQ8780 (Full slab view)






Olympus White (Honed)




Olympus White (Honed) - BQ8870 



Naxos (Honed) - BQ8864 



Tartufo (Honed) - BQ8863 

Honed finish is non-porous but may require more maintenance.



Cinza - BQ8808



Cold Spring - BQ9441



Azul Aran - BQ9470



 **Cosmic Black** - BQ9427



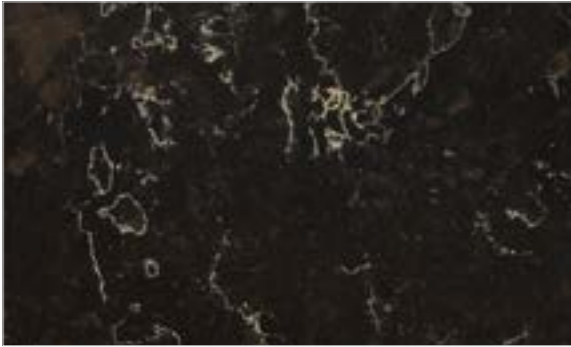
Naxos (Honed)



Ventisca - BQ8330



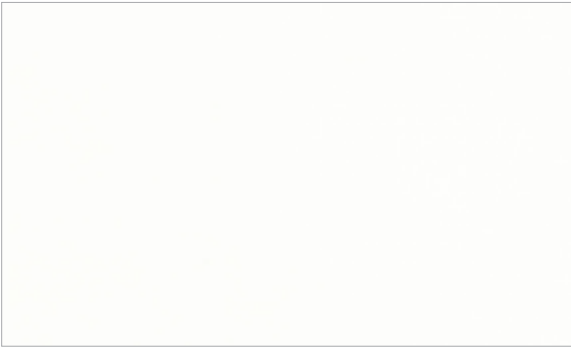
Carrara - BQ8220



Java Noir - BQ8812



Silver Sea - BQ9310



Quasar Light - BQ100



Akoya - BQ8583



Carmen Brown - BQ9340



Grey Savoie - BQ8446



Icelake - BQ8668



Serra - BQ9418




Blue Savoy - BQ8816

CLASSIC

COLLECTION

Based on a monothematic melody of stones, our Classic collection offers a blend of elegance and luxury for traditional or modern architectural projects.

 Jumbo size available



Valley White - BQ2600



Ceres - BQ2609



Valley White



Ceres



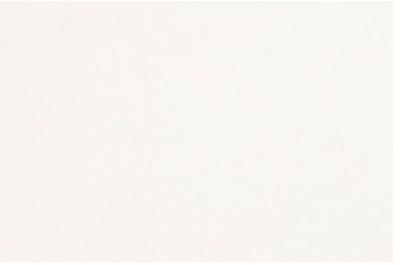
Milky White - BQ201



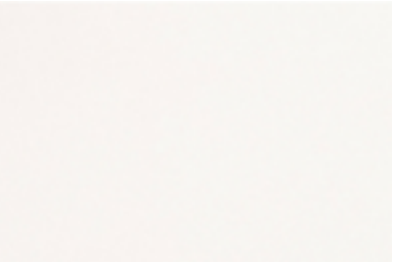
Onyx White - BQ2088



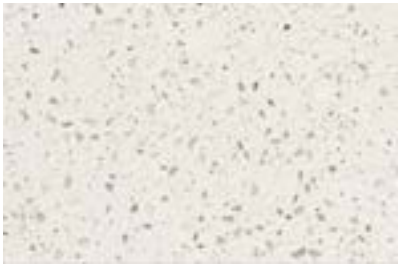
Thasos - BQ206



Artic Snow - BQ200



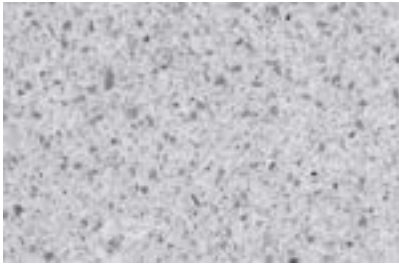
Artic Snow (Honed) - BQ200



Crystal Ice - BQ1080



Silver White - BQ400



Castelo - BQ982



Jura Grey - BQ8437



Cendre - BQ8805



Crystal Ivory - BQ850



Crystal Salt - BQ900



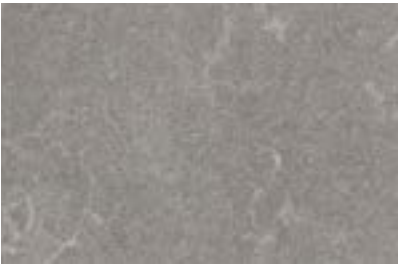
Santenay (Honed) - BQ277



Polama (Honed) - BQ278



Sabbianco - BQ2202



Uliano (Polished) - BQ8806



Uliano (Leathered) - BQ8806



Sparkling Black - BC1000



Twilight Grey - BS250



Satinet - BS124



Crystal Black - BQ262



Sparkling Red - BC186



VICOSTONE APPLICATIONS





NEW 3D VISUALIZER

Design your own space



VIRTUAL SHOWROOM TOUR

Visit our website to take a virtual tour of our showrooms and slab galleries



TORONTO



VANCOUVER



MONTREAL



CALGARY

TECHNICAL SPECIFICATIONS

SPECIFICATIONS	TEST METHOD	RESULTS
Water Absorption	ASTM C97 / C97M-18	≤ 0.02 %
	BS EN 14617-1:2005	≤ 0.02 %
Apparent Density	ASTM C97 / C97M-18	2.1 – 2.3 g/cm³
	BS EN 14617-1:2005	2.1 – 2.3 g/cm³
Flexural Strength	ASTM C880/C880M-18	Fine and medium grain: ≥ 55 MPa Coarse grain: ≥ 41 MPa
	BS EN 14617-2:2016	Fine and medium grain: > 60 MPa Coarse grain: > 40 MPa
Compressive Strength	ASTM C170/C170M-17	Dry: ≥ 200 MPa
	BS EN 14617-15:2005	Dry: ≥ 185 MPa
Chemical Resistance	ASTM C650-04:2014	Unaffected
	BS EN 14617-10:2012	Class C4
Dimension Stability	EN 14617-12:2012	Class A
Impact Resistance	ASTM C1870-18	36-inch ball drop: ≤ 0.25 in 48-inch ball drop: ≤ 0.27 in
	BS EN 14617-9:2005	> 4 J
Abrasion Resistance	ASTM C501-84:2015	Abrasive Wear index: I _w ≥ 179
	BS EN 14617-4:2012	Volume of chord: V ≤ 165 mm³ Chord length: l ≤ 27 mm
Thermal Shock Resistance	ASTM C484-99:2014	No visible damage after 10 cycles
	EN 14617-6:2012	No Visible defects after 20 cycles Change in mass: ≤ 0.05% Change in flexural strength: - 8.4% ÷ 5.4%
Freeze-thaw Resistance	ASTM C1026-13:2018	No visible damage after 300 cycles Wt.Loss: ≤ 0.09%
	EN 14617-5:2012	No obvious damage after 20 cycles KM ₂₅ = 93 ÷ 105%
Mohs's Scratch Hardness	EN 101: 1991	≥ 6
Slip Resistance	DIN 51130:2014	R9 at Honed 400
	ASTM C1028-07	Static coefficient of friction - Dry: 0.7 ÷ 0.8 (Polished/Honed finish) - Wet: 0.5 ÷ 0.7 (Polished/Honed finish)
Microbial Resistance	ASTM D6329-98	Ranking 3: Resistant to Mold Growth
Stain Resistance	ASTM C 1378-04:2014	Class A (Polished finish)
Surface Burning	ASTM E84	Class A

MATERIALS COMPARISON

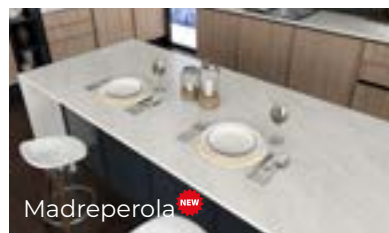
MATERIALS	QUARTZ	GRANITE	LAMINATE	SOLID SURF
Scratch Resistance	★★★	★★★	★★	★
Stain Resistance	★★★	★★	★★	★★★
Chip and Crack Resistance	★★★	★★	★★	★★★
Heat and Burn Resistance	★★	★★	★★	★★
Resistance to Household Chemicals Acids and Solvents	★★★	★★	★★	★★★
Low Maintenance	★★★	★★	★★	★
Non-absorbency and Non-porosity	★★★	★★	★★	★★★
Mold and Mildew Resistance	★★★	★★	★★	★★
Flexural Strength	★★★	★	★★	★★
Color Consistency	★★★	★	★★★	★★★
Immunity to Freeze and Thaw	★★★	★★★	★	★

KEY	★★★	Excellent
	★★	Good
	★	Fair

For Dealers: Access to download our full slabs and applications pictures in high resolution here.



INTRODUCING OUR NEW DESIGNS FOR 2021



Website: www.vicostone.ca

Email: info@vicostone.ca

Follow us [f](#) [@](#) [v](#) [p](#) [h](#) [in](#)

MONTREAL

1909 Onésime Gagnon St.,
Lachine, QC H8T 3M5
Office: 514 633 8886
Fax: 514 633 8828

TORONTO

341 Edgeley Boulevard,
Vaughan, ON L4K 3Y2
Office: 905 760 7888
Fax: 905 760 0388

WINNIPEG

sales.winnipeg@vicostone.ca
Service: 204 390 7382

CALGARY

#185 - 8610 36 ST NE,
Calgary, AB T3J 2E1
Office: 587 467 1177
Fax: 587 467 1212

VANCOUVER

1551 Broadway St., Unit 106
Port Coquitlam, BC V3C 6N9
Office: 604 949 3046
Fax: 604 469 5745